

GALENA

2024 LOOKBOOK



**VISIT OUR SHOP
522 HARRISON AVE
LEADVILLE**



**LEADVILLE INSPIRED
GUIDEBOOKS
SUN HOODIES
PEARL SNAP SHIRTS
& MORE**



LEADVILLE ADVENTURES

ROCK CLIMBING - THE KING - PAGE 8

One of the larger chunks of rock in the Leadville area and a great spot for an adventure.

SKIING - GALENA MOUNTAIN - PAGE 16

A magical basin to visit in any season. Spring skiing on Galena can be amazing.

BIKING - BIG FRIGGIN LOOP - PAGE 34

An aspirational bike route that some folks actually do in a day!

**MINER'S DELIGHT
NEAR THE TOWN OF GRANITE**

Galena Mountain Projects was founded after years of working and playing in the mountains and rivers around Leadville and the Arkansas Valley. It was an idea born out of dark starts and long days, slow walks, and tent-bound musings. What it boils down to is that we are a company that is all about place. Our western-inspired pearl snap shirts harken back to Leadville's mining history, our guidebooks help others discover new adventures, and our imagery shines a new light on the raw beauty of Lake County.

And just like our products, our origin story is a little different than most outdoor brands. We got our start writing guidebooks. Initially, we published guides to climbing and running in the Arkansas Valley that highlight the unexplored crag and the forgotten path. This summer, we're excited to bring you new guides to hiking and riding in and around the Arkansas Valley. And while our forthcoming books stick slightly more to the realm of the established, we hope we can provide a creative spin or new perspective on the familiar route and ride.

And why does it matter that we got our start scrubbing dirt off new climbing routes and scouring old maps? Because at the end of the day, in order to pay homage to a place, you need to know it. And while there is always one more ridge to explore or boulder to hike to, we feel confident that our homegrown apparel, guidebooks, and art capture some part of the essence of Leadville, and will hopefully inspire adventure and make you smile.

Why Galena? Our namesake peak is clearly visible from downtown Leadville, CO on the western skyline. It's not that tall compared to the neighboring 14er's, and the easiest way to the top is a pleasant outing for durable elementary schoolers; however, this unpretentious peak beckons you to visit its ridges, basins, and couloirs. Our products embody the spirit of Galena Mountain and the simple joys of our home ranges.

The last year has been filled with learning and exploration here at Galena. Since opening the doors to our shop in June 2021, we've enjoyed the company of friends new and old, and have gotten to spread the good word about adventuring in the Arkansas Valley. Part gallery and part retail space, we love connecting folks to the outdoors, whether that is through an inspiring image, a guidebook, or an adventure-ready pearl snap shirt.

See you out there!



Justin Talbot



Dave Clark-Barol



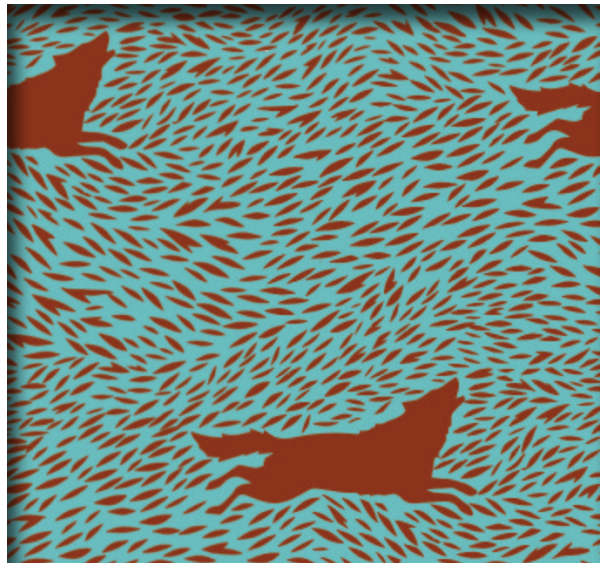
SAWATCH SUN HOODIE V2

Bamboo - \$88

This bamboo sun hoodie will likely be the softest and lightest sun shirt you have ever owned! A pearl snap will keep the hood on when you are moving fast and give you maximum sun coverage on scorching summer days. The design on the back which includes Galena Mountain was made by Salida artist Brinkley Messick. All Gender sizing, XS fits folks that are about five feet tall, XXL fits those that are 6'4". Available in Overcast, Sage Mesa, Deep Blue and Poppy.

**MINER'S DELIGHT
NEAR THE TOWN OF GRANITE**

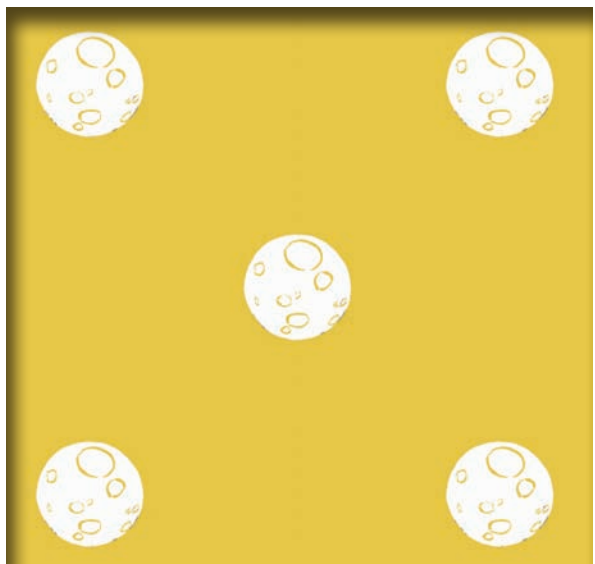
NEW STRETCH LINEN PATTERNS



WOLVES



BUTTERFLIES



MOON POKA-DOTS

ART BY BRINKLEY MESSICK

MEN'S SHORT SLEEVE SHIRTS

Designed and Tested in Leadville - \$86

Equally at home hiking the CT, riding bikes in the mountains or hanging out on the rooftop of the Treeline Kitchen on a warm July evening. Now available in three styles.

INTERLAKEN STRETCH LINEN

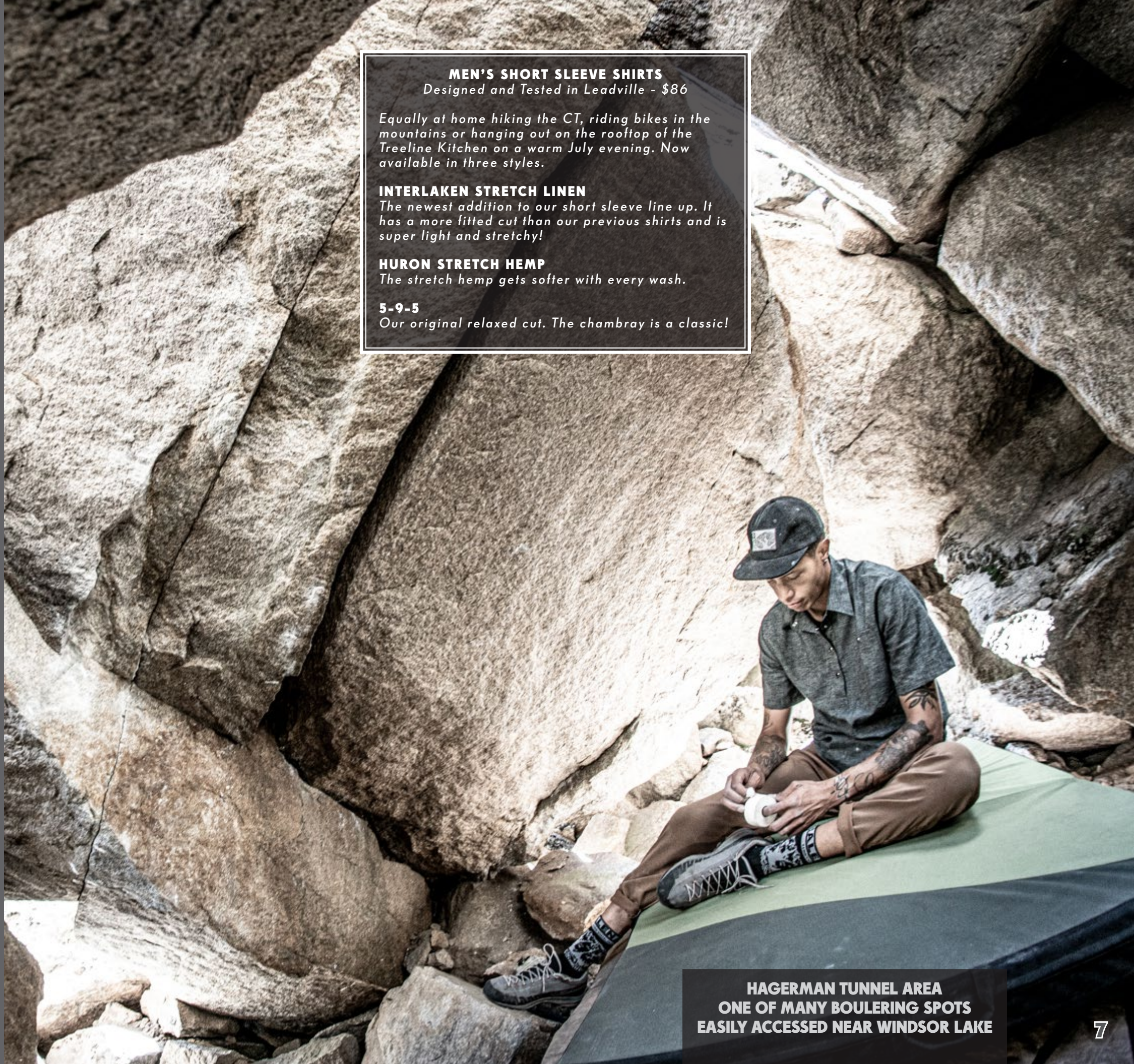
The newest addition to our short sleeve line up. It has a more fitted cut than our previous shirts and is super light and stretchy!

HURON STRETCH HEMP

The stretch hemp gets softer with every wash.

5-9-5

Our original relaxed cut. The chambray is a classic!



**HAGERMAN TUNNEL AREA
ONE OF MANY BOULDERING SPOTS
EASILY ACCESSED NEAR WINDSOR LAKE**

THE KING

An amazingly cool formation by Lake County standards. Now home to some wild routes at 11,600'. A great place to crag in the summer and fall with a relatively short 45 minute approach from the Windsor Lake trailhead.

**WHEN WE WERE KINGS
THE HARDEST ROUTE ON THE KING
WINDSOR LAKE IN THE BACKGROUND**



THE KING

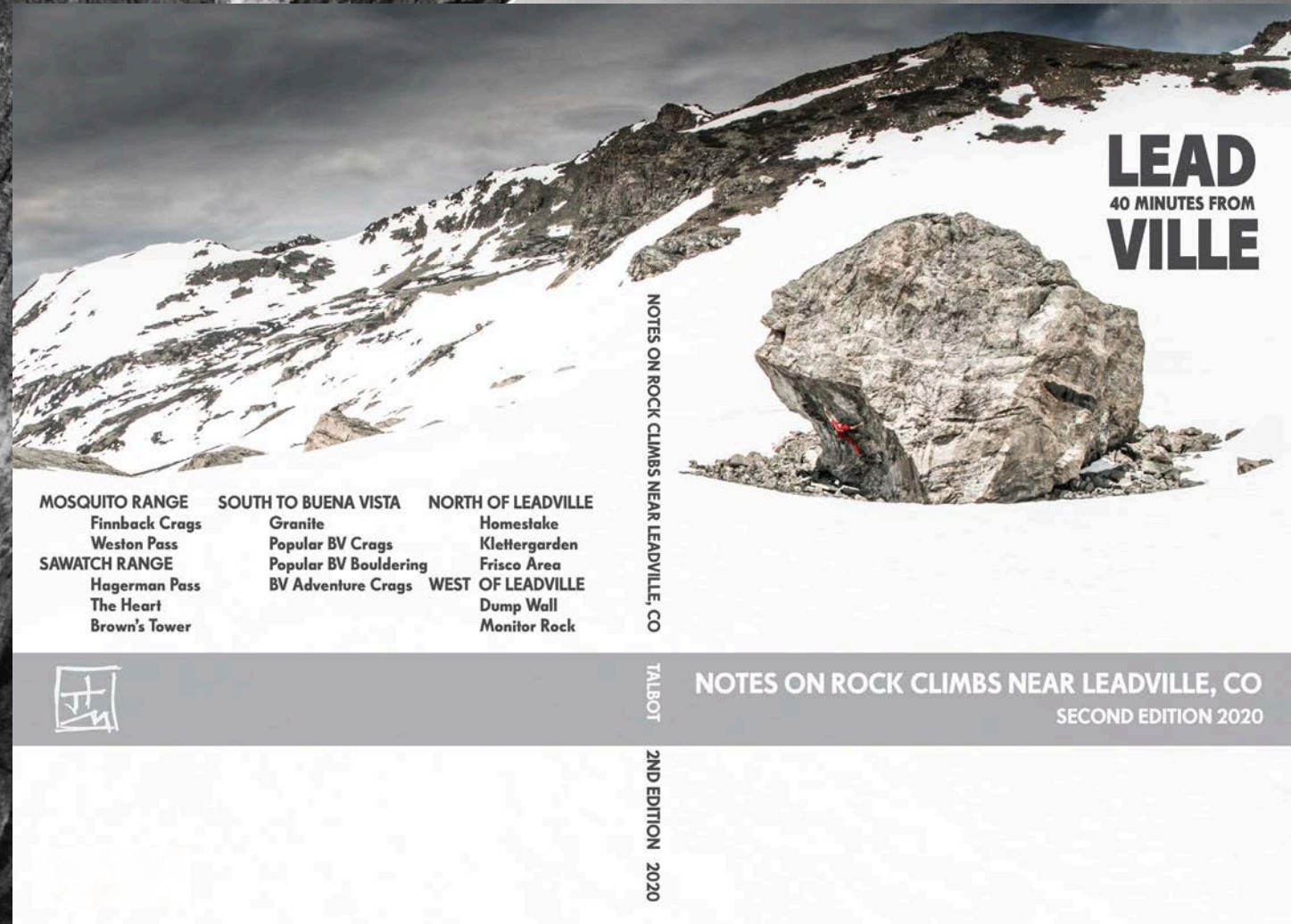


WHEN WE WERE KINGS

An amazingly cool formation by Lake County standards. Now home to some wild routes at 11,600'. A great place to crag in the summer and fall with a relatively short 45 minute approach from the Windsor Lake trailhead.

- 1 Black Top Road ★★☆☆ .11R 260' FA Adrian Weaver, Chris Ferraro
P1 .11 120' Layback the obvious .9 leaning offwidth (bolt) to some thin .11 climbing past another bolt (a fall here could be dangerous). Sustained .10+ climbing leads to the anchor.
P2 .11 70' Climb a .11 fingers layback to easier climbing above. Make a gear belay on the orange slab.
P3 .8 70' Continue up easier climbing to an anchor near the summit.
- 2 Crack in Slab ★★☆☆ .9+ 80' FA Rob Dillon
Climbs nice hand and finger cracks up to the base of the large leaning Chosstown Traffic corner. Fixed anchor.
- 3 Corner in Face AKA Chosstown Traffic ★★☆☆ .12PG13 110' FA AW
After climbing Crack in Slab head up the huge imposing corner clipping several bolts and using some gear towards the top.
- 4 When We Were Kings ★★☆☆ .13c 80' FA Chris Barlow
After climbing Crack in Slab head up the Chosstown corner then out to the arête. Once around the arête challenging laybacking and bouldery moves lead to the bolted anchor.
- 5 Astrominer ★★☆☆ .11+ 220' FA R. Dillon
P1 11.d 110' Climb the first 20' of Crack in Slab then climb the burly crack up and right to a good ledge. From the ledge climb the increasingly more difficult corner to the belay. Tips jamming at crux-don't pro the locks.
P2 10.c 110' Continue up the right leaning chossy corner to a ledge then head up better rock on a thin layback crack. Make two rappels with a 70m rope.

- 6 Adrians Direct Start ★★☆☆ .11PG13 100' FA Adrian
A spicy all gear direct start to Astrominer.
- 7 Escape Velocity ★★☆☆ .12 110' FA Rob Dillon
Great direct start to Astrominer. Bring three .5 and .75 cams and two long slings to sling a horn.
- 8 Rain of Terra ★★☆☆ .10c 70' FA R. Dillon
Cool crack. Anchor should be upgraded from the existing 1/4 inch bolts.
- 9 Royal Tour ★☆☆☆ .8+PG13 FA R. Dillon and Dalton Reed
P1 .8 100' Wander up the big ramp, with an exciting high-step midway.
P2 .8 Move directly left on ledge, passing underneath bolted variation, to a 5.8 boulder problem moving left. Finish up short corner to ledge, and move left to belay under best-looking summit dihedral.
P2 variation .10 This Crown Variation is the recommended way to climb pitch two. Follow two bolts to a short right facing corner with pin.
P3 .8 Climb up through some veg to a short, stout right facing corner; continue up ledgy corner avoiding nastier terrain to right.
- 10 Road of Trials ★★☆☆ .10 130' FA R. Dillon Dalton Reed
Begin up the Royal Tour ramp, cut left at second opportunity along a ledge to short RF corner leading to obvious roof. Pull the roof, through the second roof and flare with finger crack and finish up Crown Variation to ledge.



LEAD
40 MINUTES FROM
VILLE

NOTES ON ROCK CLIMBS NEAR LEADVILLE, CO

TALBOT

2ND EDITION 2020

NOTES ON ROCK CLIMBS NEAR LEADVILLE, CO
SECOND EDITION 2020

- | | | |
|---|---|---|
| MOSQUITO RANGE
Finnback Crag
Weston Pass | SOUTH TO BUENA VISTA
Granite
Popular BV Crag
Popular BV Bouldering
BV Adventure Crag | NORTH OF LEADVILLE
Homestake
Klettergarden
Frisco Area
WEST OF LEADVILLE
Dump Wall
Monitor Rock |
|---|---|---|



40 MINUTES FROM LEADVILLE
NOTES ON ROCK CLIMBS NEAR LEADVILLE, CO - 2ND ED
6x9 Inches - 192 Pages - Full Color - \$38

A homegrown climbing guidebook, envisioned, researched and designed in Leadville by local climbers. Includes info on sport, traditional, and boulder climbs in Lake, Chaffee, and Summit Counties. This edition includes updates to most areas and more crags in Buena Vista and Frisco.

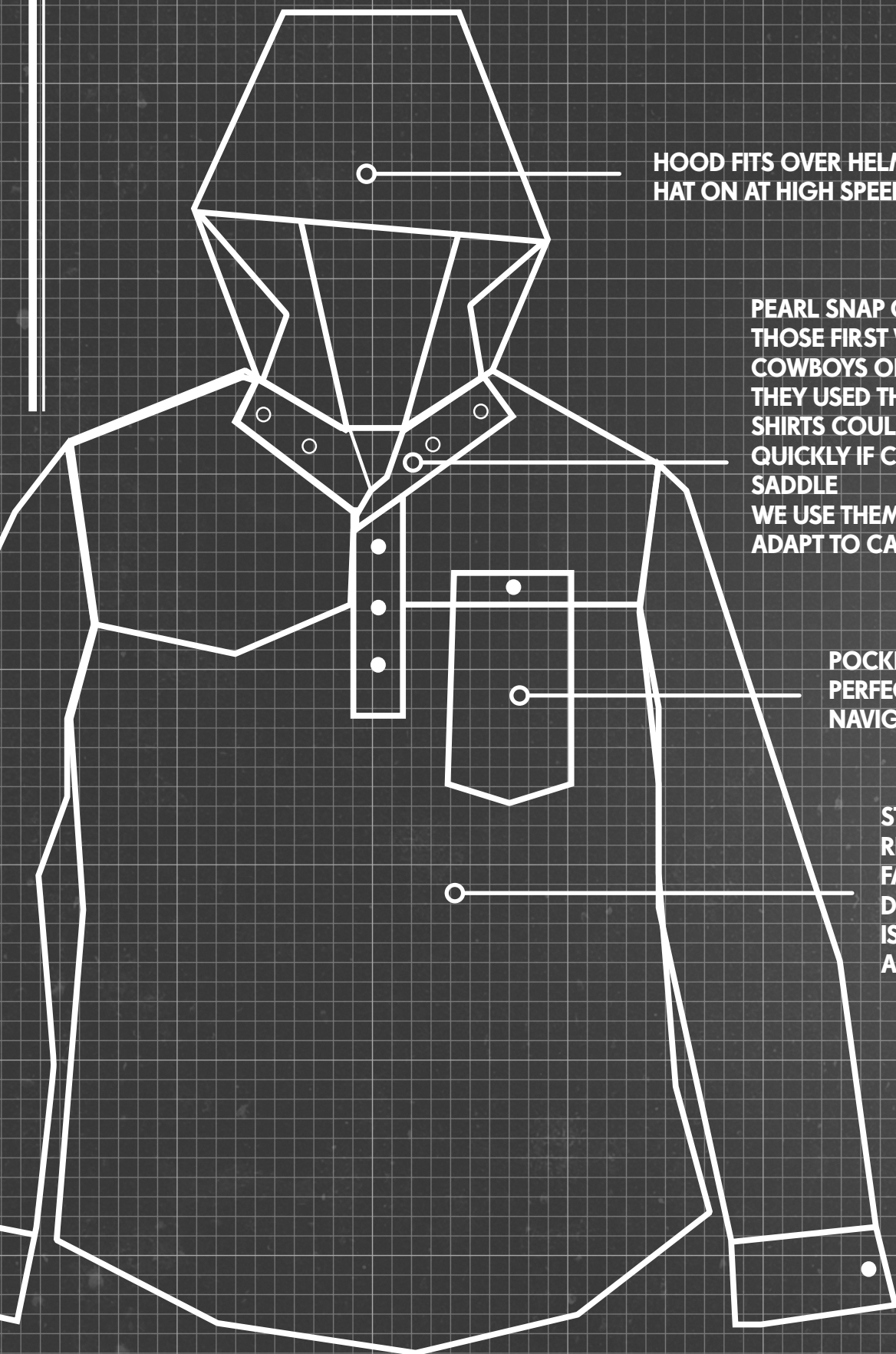


Consequently, you are mostly alone. In the land of thousands of climbers, swarming their crags and spraying their opinions over the web and their magazines, you have this place to yourself. It's no one's paradise, yet it is not without its redeeming qualities. You can stay in shape for forays to greater venues, and if you keep quiet the best things about the place will remain thus.

Once in a great while, you score. Your expectations have lowered a bit, after a couple seasons of exploring entire basins holding a handful of glacially polished eggs, and anyhow you can't beat the aerobic training. This rock here...feels good in the hand. Tawny granite, cloven by gravity, rounded by mountain weather, sticks to your grip in the crisp alpine air and for once, the edges stay put. You bring friends and rejoice together in the discovery, celebrating movement and circumstance, the precious brevity of the season that permits you to move about on simple dirt and rock, skin bared to the sun. Maybe there are berries. All possible variations are climbed. This isn't why you came, but it might be why you stay a little longer.

-Excerpt from an essay by Rob Dillon

MT OKLAHOMA
LOWERING OFF ONE OF THE STEEP PITCHES
AT THE BASE OF THE HEART CRAG



HOOD FITS OVER HELMET & KEEPS HAT ON AT HIGH SPEEDS

PEARL SNAP CLOSURE SIMILAR TO THOSE FIRST WORN BY THE RODEO COWBOYS OF THE 1930S THEY USED THEM SO THAT THEIR SHIRTS COULD BE REMOVED QUICKLY IF CAUGHT IN THEIR SADDLE WE USE THEM SO YOU CAN QUICKLY ADAPT TO CHANGING CONDITIONS

POCKET FITS PHONE PERFECTLY FOR FAST NAVIGATION

STRETCH FABRICS WILL REMIND YOU OF YOUR FAVORITE BUTTON-DOWN THIS SHIRT IS READY FOR ANY ADVENTURE

ROLLABLE CUFFS FOR THE HOTTEST SPRING DAYS ON SNOW AND SUMMER DAYS ON THE RIVER



CACTUS BLOOM



LIMITED EDITION EMBROIDERED

LOW TIDE SUNSHIRT
Designed & Tested in Leadville - \$138/\$148
Inspired by the old button down that you have been wearing as a sun shirt for years, these stretchy shirts are perfect for hot spring days on snow or summer days on the river.
Light and breathable, this shirt is comfortable on your skin and has a hood that will keep your hat on as you mach turns down perfect corn slopes. This shirt is now made in a variety of stretch fabrics including Linen, Hemp, and Cotton. All fabrics contain a little bit of spandex.

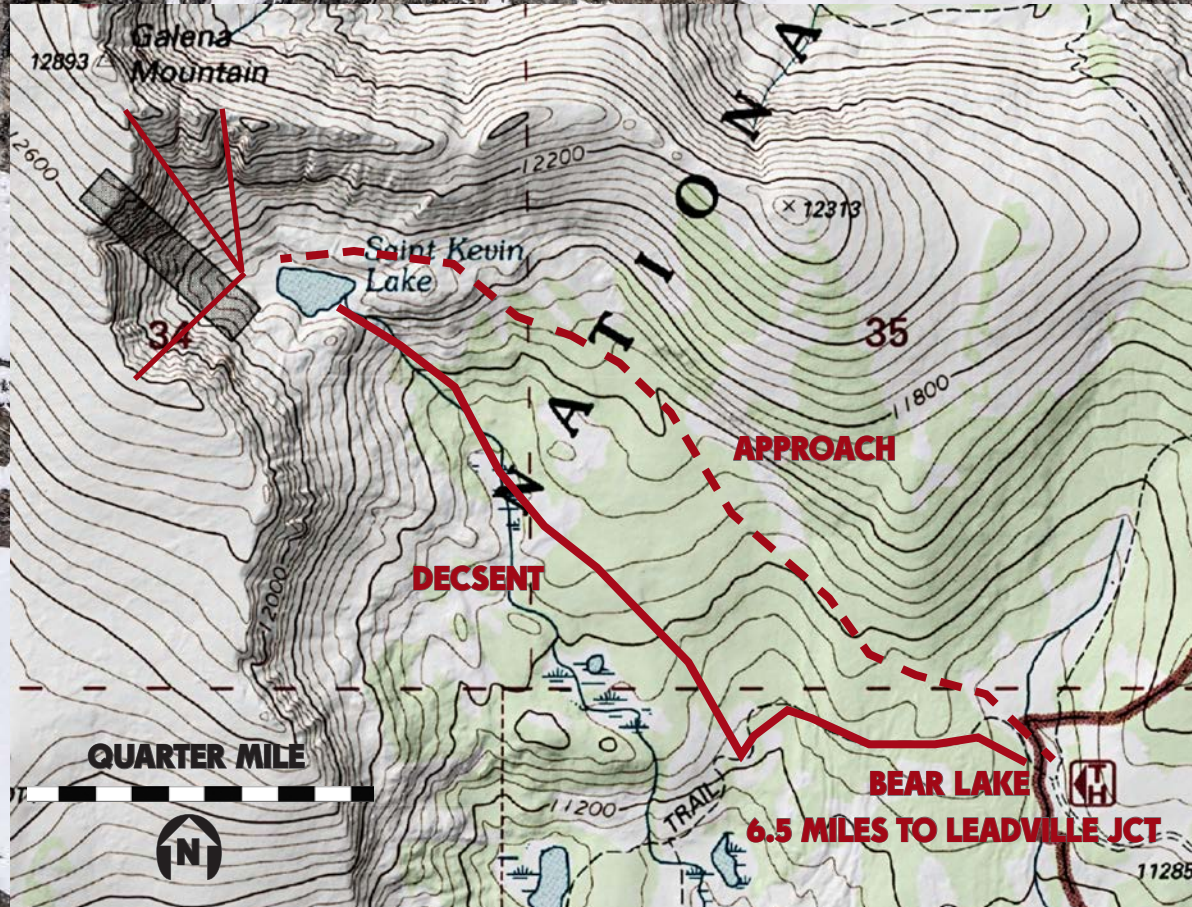


STEALTH

ENGINEERED FOR THE ALPINE

GALENA MOUNTAIN

Our brand's namesake is home to fun summer and winter adventures. From the Bear Lake trailhead it is only a 1.25 mile approach into the basin and there are multiple 600'-800' couloirs of various aspects that make for steep ski descents. Skiing in this area is very prone, wait for stable spring conditions and ski at your own risk.



GALENA MOUNTAIN
THE SUMMIT "RABBIT EARS" COULOIR
APRIL CONDITIONS



PARTY SKI SUN HOODIE

Poly Spandex - \$68

Made for the party ski or any fun adventure! This poly/spandex blend shirt is a silky smooth lightweight option for fun, warm days in the alpine, or on the river. Signature pearl snap hood closure. All-Gender sizing, XS fits folks that are about five feet tall, XXL fits those that are 6'4".

The Surreal Sawatch print is a Sawatch Range-inspired design with mountains and moons. Art by Brinkley Messick.



DON'T FORGET TO CHILL



SIGNATURE HOODIES *Designed in Leadville - \$58*

The art of John Kelley, Marley Seifert, Brinkley Messick, Jill Gardner and Ned Warner graces what may be the softest hoodies you have ever owned. The perfect piece for chillin' after a long day out in the wilds of Leadville. We now have six different designs and stay tuned for more sweatshirts featuring Galena Mountain by various local artists.





THE LEADVILLE RUNNER HAT

SUMMER HATS & BEANIES

Designed in Leadville - \$35

These hats feature the work of local artists and different iterations of the Galena logo. Hats now range from super light endurance style mesh hats to cozy beanies for cool nights. At any time we have about ten different styles and only make about 200 of each.

Our brightly colored running hats will keep you thinking warm thoughts even on the coldest Leadville winter day.



SPACE CADET CORD



SLATE GREY



COSMIC LATTE



DUSTY BLUE



BLAZE



SAGE



RUN & RIVER HAT



**WEST SHERIDAN
THIS PEAK IN THE MOSQUITO RANGE
HAS AN OLD CART PATH LEADING MUCH
OF THE WAY TO THE SUMMIT**

ALL-GENDER LONG SLEEVE SHIRTS

Designed in Leadville - Made in Denver

DYER STRETCH DENIM - \$142

Equally at home climbing, skating or biking in the alpine. This shirt is super stretchy, making it ideal for action sports!

TWIN LAKES TWILL - \$148

This heavyweight and super durable overshirt is one of our favorites for doing work outside. The wool and polyester blended fabric isn't itchy and has a subtle herringbone pattern.



TWIN LAKES TWILL





FRASCO FLANNEL

ALL-GENDER LONG SLEEVE SHIRTS

Designed in Leadville - Made in Denver

FRASCO FLANNEL - \$142

This perfectly cozy flannel is ideal for hanging out by the woodstove at your favorite 10th Mountain Hut or wearing to work on a snowy day. Constructed of 100% cotton.

CASCO CORD - \$142

This heavy stretch corduroy shirt is perfect for an afternoon dog walk or a dinner at The Famous. It will soon become one of your favorites.

TABOR OPERA HOUSE



GALENA MOUNTAIN MERINO
The High Country Adventure Sweater
Designed in Leadville - \$136

Living at 10,000 feet, having a sweater on hand is always a good idea. That's why we set out to create the ultimate mountain sweater with a tighter knit, an athletic cut, and subtle elbow patches to prevent blow-outs. Our birdseye style sweater is timeless and versatile- suitable for early morning Leadville rides, chilly days at the crag, or heading out for a coffee or evening beverage with friends. Available in Charcoal/Grey and Blue/Black.



I was looking for a “throw on no matter what I’m doing” sweater and Galena Merino has been exactly that. Perfect weight, doesn’t stink if I sweat in it, wears just as well for a client meeting as it does for a hike. Great job y’all. @spiritualmulch

**SAGE BRUSH RIDGE
NEAR THE COLORADO MOUNTAIN
COLLEGE TRAILS**



WOMEN'S 5-9-5 SHORT SLEEVE

Designed in Leadville - Made in Denver - \$86

Equally at home hiking the CT, riding bikes in the mountains or hanging out on the rooftop of the Treeline Kitchen on a warm July evening. Now available in a men's and women's cut.

Made in a variety of fabrics from a popular casual stretch cotton chambray to a more technical stretch hemp/poly blend. The runner on page 39 is wearing our "alpineapple" pattern and the biker on page 16 is wearing our classic stretch chambray.



**THE TOWN OF GRANITE
HOME TO MANY COOL OLD CABINS
AND ABOUT 40 RESIDENTS**



5% FOR CLOUD CITY WHEELERS

LEADVILLE BACKYARD
CMC - Timberline Trails
Leadville Mining District
Turquoise Lake

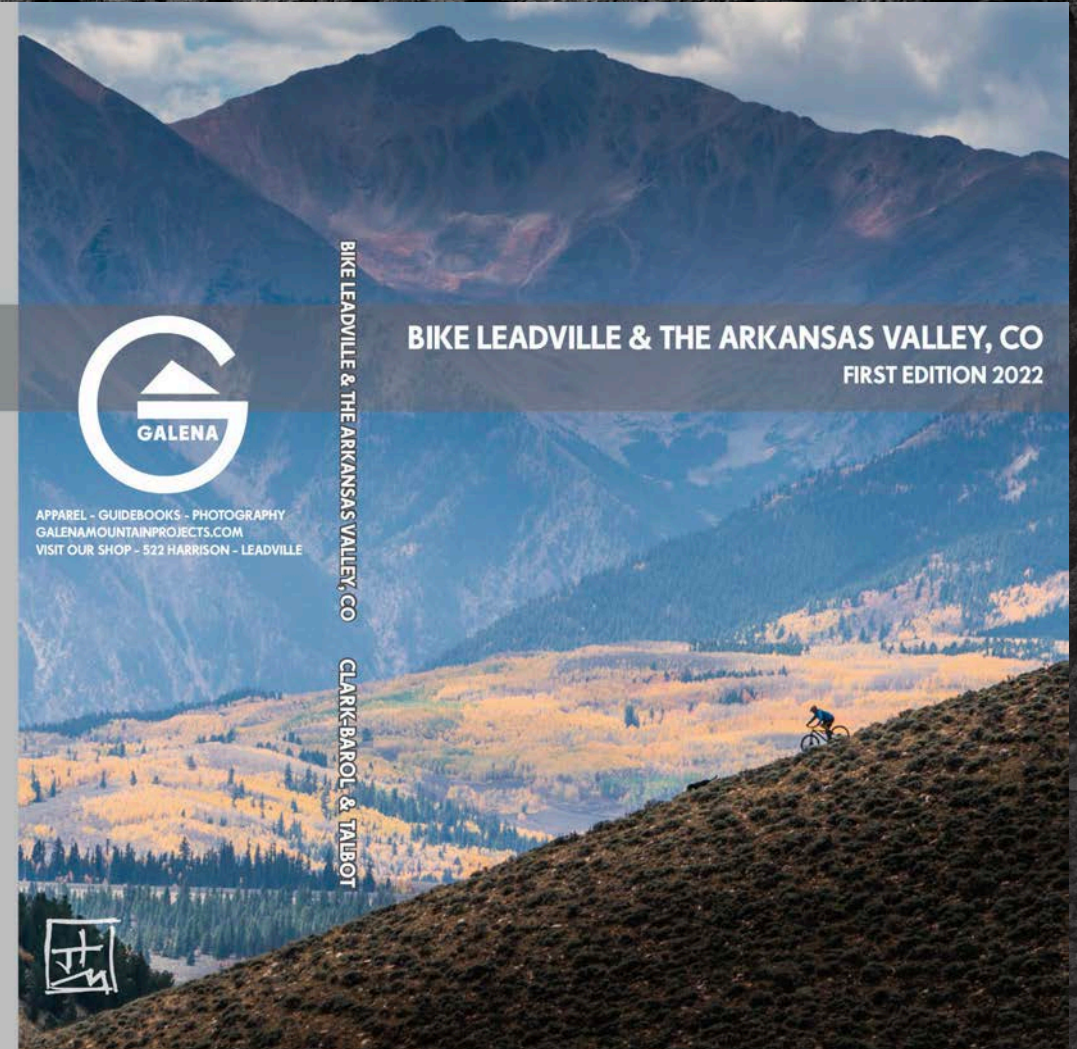
WINTER GROOMED TRAILS
CMC - Wheelers Trails
Tenn Pass Nordic Center
Leadville Mining District

SAWATCH HIGHCOUNTRY
14ers
Halfmoon - Twin Lakes
Monarch Crest
GRANITE & BUENA VISTA
Granite Dirt Roads
Vitamin B
Midland Trails

SALIDA
Arkansas Hills (S Mountain)
Methodist Mountain
Rainbow Trail
NORTH OF LEADVILLE
Tenn Pass - Camp Hale
Dirty Copper Triangle
Frisco 20

ISBN 979-8-9871090-1-4
\$30.00
53000>
9 798987 109014

\$30



BIKE LEADVILLE & THE ARKANSAS VALLEY, CO
FIRST EDITION 2022



APPAREL - GUIDEBOOKS - PHOTOGRAPHY
GALENAMOUNTAINPROJECTS.COM
VISIT OUR SHOP - 522 HARRISON - LEADVILLE

BIKE LEADVILLE & THE ARKANSAS VALLEY, CO
CLARK-BAROL & TALBOT

BIKE LEADVILLE & THE ARKANSAS VALLEY, CO
6x9 Inches - 132 Pages - Full Color - \$30

While this book concentrates it's effort highlighting the bike trails near Leadville it also includes rides all the way down to Salida. The Leadville area winter mountain bike trails are also featured as well as narrative pieces about the Winter MTB Race Series, the history of BV and Salida Trails, and a photo essay about spring crust biking in the high valleys of the Mosquito Range.

**JUST OUTSIDE GRANITE
A GREAT SPOT FOR GRAVEL BIKING ON
OLD STAGE COACH ROADS**



BIKE THE BIG FRIGGIN LOOP

Inspired by Salida's Big Friggin Loop, the LBFL is an annual Grassroot Cycling Event hosted by Rafa Millan-Garcia, the proprietor of Leadvelo Bicicasa. The route is a figure 8 loop starting and finishing in downtown Leadville.

The total distance is around 115 miles with 15,000+ft of climbing. This course goes above treeline three different times in the first 20 miles, and the last leg incorporates all of Segment 8 of the Colorado Trail from Copper to Tennessee Pass. Come prepared and leave early. This ride is heavy-duty.

RED CLIFF

48 mi

COPPER MTN

SEARLE PASS

CAMP HALE

25 mi

KOKOMO PASS

TENNESSEE PASS

8 mi

ZION

23 mi

LEADVILLE

5 mi

BALL MTN

The Dirty Copper Triangle is a 32 mile loop that shares part of the gorgeous northern section of this ride. Check it out our bike guidebook.

LEADVILLE'S BIG FRIGGIN LOOP



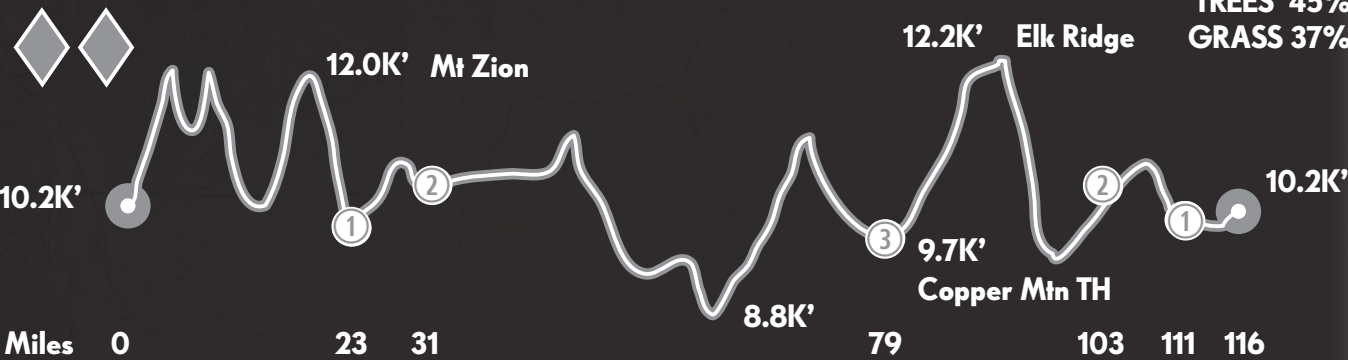
Caltopo Map



Driving Directions

17,200'
116
miles total
17,200'

JUNSEPT



SHRUB 18%
TREES 45%
GRASS 37%

FIVE MILES



LEADVILLE AREA 14ERS & POPULAR HIKES

6x9 Inches - 148 Pages - Full Color - \$35

This book could easily be called "50 Favorite Hikes near Leadville." From long hikes up 14ers to backyard strolls this book covers the best of the best Leadville area and Upper Arkansas Valley adventures. Stories from Emily Olsen who climbed Mt Elbert six times back to back and the history of the CO 14ers Initiative add narrative flavor.

5% FOR Colorado Fourteeners Initiative
CLOUD CITY CONSERVATION CENTER

BUY ONLINE - GALENAMOUNTAINPROJECTS.COM
VISIT OUR STORE - 109 W 6TH - LEADVILLE

LEADVILLE AREA 14ERS & POPULAR HIKES
FIRST EDITION 2022

SAWATCH NORTH
Mt Elbert
Mt Massive
Other Area 14ers
Alpine Lake Hikes
Turquoise Lake
Fish Hatchery

MOSQUITO RANGE & LEADVILLE
Mayflower Gulch
CMC Trails
Mt Sherman
Buckeye Peak

SAWATCH SOUTH
Mt Yale
Mt Princeton
Mt Columbia
Other Area 14ers
Harvard Lakes
Alpine Lake Hikes

BUENA VISTA & GRANITE
Midland Hill
Riverside Walks
Davis Meadows
Buffalo Peaks

TALBOT
LEADVILLE AREA 14ERS & POPULAR HIKES

\$35

**HURON PEAK
LOOK CLOSELY TO SEE HIKERS
NEARING THE SUMMIT**

SAWATCH SUN HOODIE
Designed in Leadville - Printed in Colorado - \$48

This super thin triblend sun hoodie is the perfect piece for your next run, ride, or float! A small black pearl snap will keep the hood on when you are moving fast and give you maximum sun coverage on scorching summer days. The design, which includes Galena Mountain was made by Salida artist Brinkley Messick. Unisex sizing, XS fits folks that are about five feet tall, XXL fits those that are 6'4".



MOSQUITO RANGE
ENJOYING A STROLL ON THE SEEMINGLY
ENDLESS HIGH GRASSY RIDGES

I felt on top of the world at mile 50.

I climbed Hope for a second time, this time, though, accompanied by my sister who told me stories, played music, and made me remember why I signed up for this. We crested the top of Hope together and I felt overcome by love, strength, humility, and the knowledge that Nix got me to that point. The sun set, we shared stories of Nix, and what grieving for the past year had been like. We turned on our headlamps, crossed freezing cold knee-deep water, and made it down to Twin Lakes with 15 minutes to spare.

I took off into the darkness with my best friend and hit a wall. It was dark, I was tired, I'd made it over Hope—twice—and felt as though I was maxed out. I wanted to lay down and sleep and forget about Nix and this goal and call it a day. I'd already ran 60+ miles, after all. I was nervous the cut-off times would get smaller and smaller and I figured I may as well quit while I was "ahead." I felt defeated.

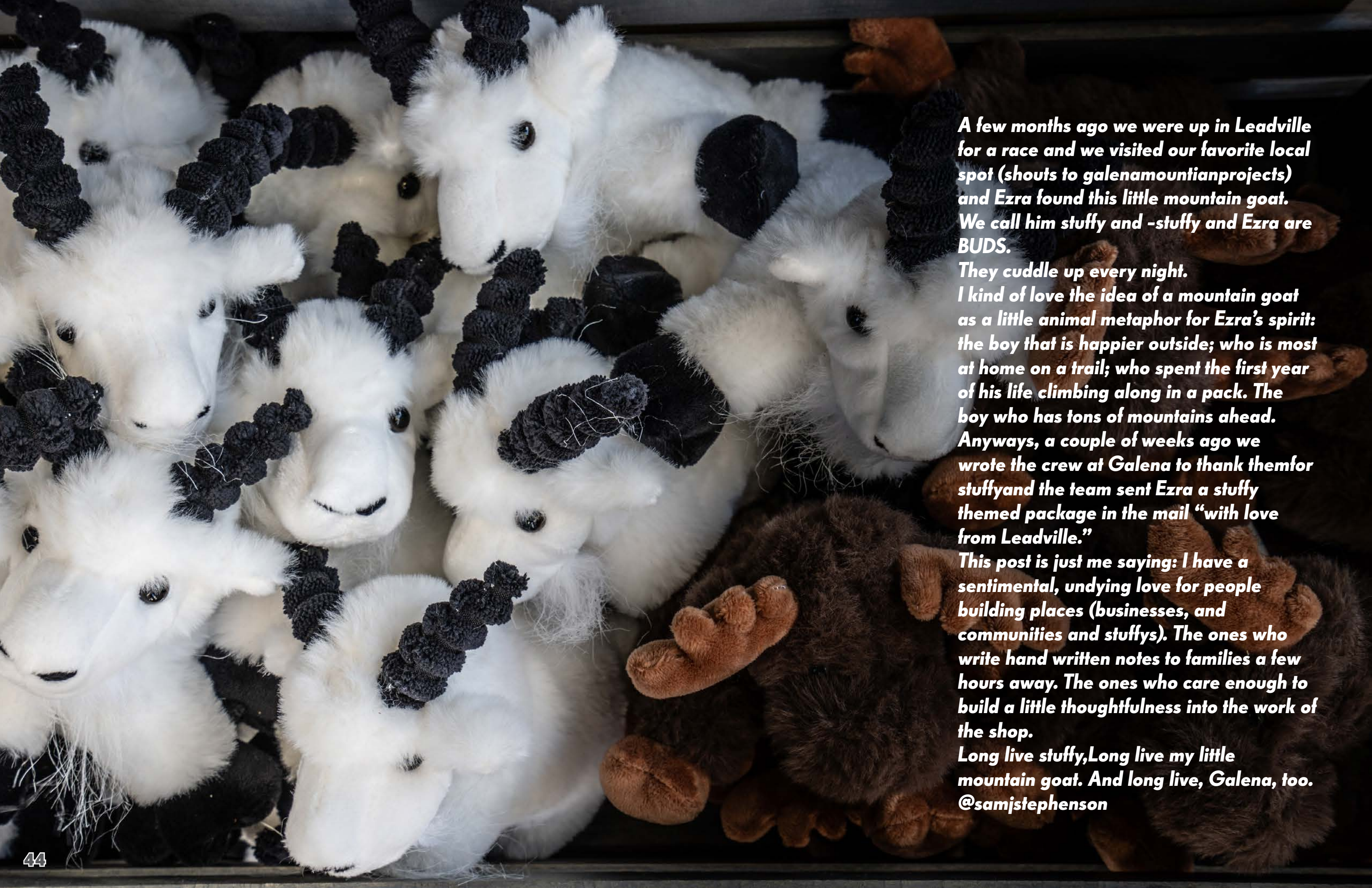
-Excerpt from an essay by Liz Andrews



THE LEADVILLE RUNNER
A Guide to Runs Near Leadville, CO
178 Pages - 8x10 Inches - Hard Cover - \$45

Part guidebook, part photo book, guaranteed to get you psyched on Leadville area adventure runs. Covers routes near Buena Vista, Leadville and Frisco most of which are in the 15 mile range.

**MOSQUITO RANGE
VIEW FROM THE SHOULDER OF
MT EVANS TO MT SHERIDAN**



A few months ago we were up in Leadville for a race and we visited our favorite local spot (shouts to galenamountainprojects) and Ezra found this little mountain goat. We call him stuffy and -stuffy and Ezra are BUDS.

They cuddle up every night.

I kind of love the idea of a mountain goat as a little animal metaphor for Ezra's spirit: the boy that is happier outside; who is most at home on a trail; who spent the first year of his life climbing along in a pack. The boy who has tons of mountains ahead. Anyways, a couple of weeks ago we wrote the crew at Galena to thank them for stuffy and the team sent Ezra a stuffy themed package in the mail "with love from Leadville."

This post is just me saying: I have a sentimental, undying love for people building places (businesses, and communities and stuffys). The ones who write hand written notes to families a few hours away. The ones who care enough to build a little thoughtfulness into the work of the shop.

Long live stuffy, Long live my little mountain goat. And long live, Galena, too. @samjstephenson